

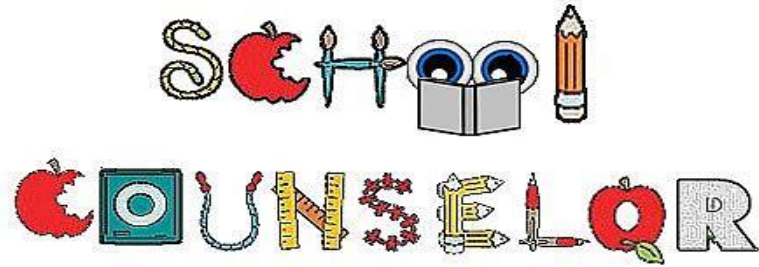
Franklin High School

2021-2022 House Bill 5

Presentation



Your



Main Campus

A-Chan → *Ms. Priego*

Chao-J.Fernandez → *Mrs. Schuler*

K.Fernandez-Kim → *Ms. Rendon*

Kin-Oli → *Mrs. Jamison*

Olj-San → *Mr. Hunter*

Sao-Z → *Ms. Arriola*

Dual Credit/Projects → *Mrs. Pizana*

Magnet Campus

A-Gr → *Mrs. Martinez*

Gs-Mir → *Ms. Palacios*

Mis-Z → *Mrs. Angel*



Start thinking about college...

- Enroll in challenging classes
- Keep an eye on your grades
- Join different clubs & organizations
- Explore the websites of your chosen colleges for important high school information
- Take PSAT8/9 seriously



Please join the following as Franklin Students:

<https://www.goingmerry.com/c/lisas-ovv6jp> This is the **Going Merry** Site where scholarships will be tracked for graduation. Please complete the profile to the best of your ability so you get the most out of the scholarships that are right for you.

From your **Go-Center**



Download the **Band app** on your phone and join the Franklin Go Center for all important information about college visits, graduation, scholarships, and more!

Update or create your raise.me account to earn micro grants from colleges that DO NOT have to be paid back. The more information you enter the more you earn. Follow as MANY schools as you can and update your information every semester. Remember our grades are by semester and number grades not letter grades.

Call Ms. Schoenbrun at 915-302-0142 for more help on anything for college, career and military readiness.

Pre-AP/AP vs. Regular Classes

- Colleges always look for rigor of schedule.
- Per FHS policy, students are not allowed to drop Pre-AP/AP classes after first day of class.



Top 10% Rule

Students who graduate in the top ten percent of their graduating class are eligible for admission to any *public* college or university in Texas.

**Exception UT Austin admits top 6%*



NCAA Eligibility Center

Athletes desiring to play at the collegiate level should register at this website:

www.eligibilitycenter.org

***Credits earned through Credit by Exam or on Edgenuity DO NOT count toward the core requirements for NCAA eligibility.



House Bill 5

2012-2013 Texas Legislature, House Bill 5

Approved to reshape the graduation plans for all students in the state of Texas.

Students choose their high school Program of Study

Beginning with students entering 9th grade in 2014-2015

5 Endorsement areas:

MULTIDISCIPLINARY STUDIES

ARTS & HUMANITIES

BUSINESS & INDUSTRY

PUBLIC SERVICES &

STEM (SCIENCE, TECHNOLOGY, ENGINEERING & MATHEMATICS)



EPISD currently offers courses to satisfy all Five
Endorsements

Graduation Plans

HB5

9th grade 2013-14 and prior

Minimum
Recommended
Distinguished
Achievement Plan (DAP)



9th grade 2014-15 and thereafter

Foundation

Endorsement
Distinguished Level
of Achievement



Endorsements

(Distinguished Level of Achievement)

- * STEM
- * Arts & Humanities
- * Business & Industry
- * Public Services
- * Multi-Disciplinary

English 1
English 2
English 3
Advanced English



Algebra 1
Geometry
Algebra 2
Advanced Mathematics



Biology I
One Adv. Science Course, Category 1
Two Adv. Science Courses, Category 2



World History or World Geography
US History
Government
Economics

EPISD
Core Concentration
Foundation
All students must complete the Foundation Plan



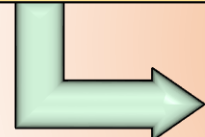
Foreign Language
(Same Language)
2.0 Credits



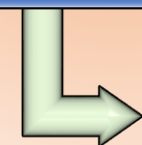
P.E. or P.E Equivalent
1.0 Credit



0.5 Health OR
1.0 Health Science I



Communication Apps (Speech)
.5 Credits



Fine Arts Same Genre
1.0 Credit



Technology Credit
1.0 Credit



Elective Credit
0.5 to 1.0 Credit

EPISD

Required Elective

Foundation (Continued)



EPISD HB 5 Foundation Graduation Requirements With Endorsement and Distinguished Level of Achievement

Courses	Credits	9 th	10 th	11 th	12 th
English	4	English I	English II	English III	Advanced English
Math	4	Algebra I	Geometry	Two Advanced Math** Courses One of Which Must Be Algebra II	
Science	4	Biology	Advanced Science	Advanced Science	Advanced Science
Social Studies	3	World Geography and/or World History		US History	Government & Economics
Fine Arts	1	1.0 credit at any grade level (Same Genre)			
Languages (LOTE)	2	2.0 credits in the same language at any grade level			
P.E. or P.E. Equivalent	1	1.0 credit at any grade level			
Speech	.5	Communication Apps. OR Professional Communication (grades 10-12)			
Health	.5	0.5 Health OR *(.5 Lifetime Nutrition/.5 Intpersonal Studies OR 1.0 Health Science)			
Technology	1	1.0 credit at any grade level			
Electives	0.5 to 1.0				
EPID Foundation Total	22				
Endorsement	4				
Total	26				

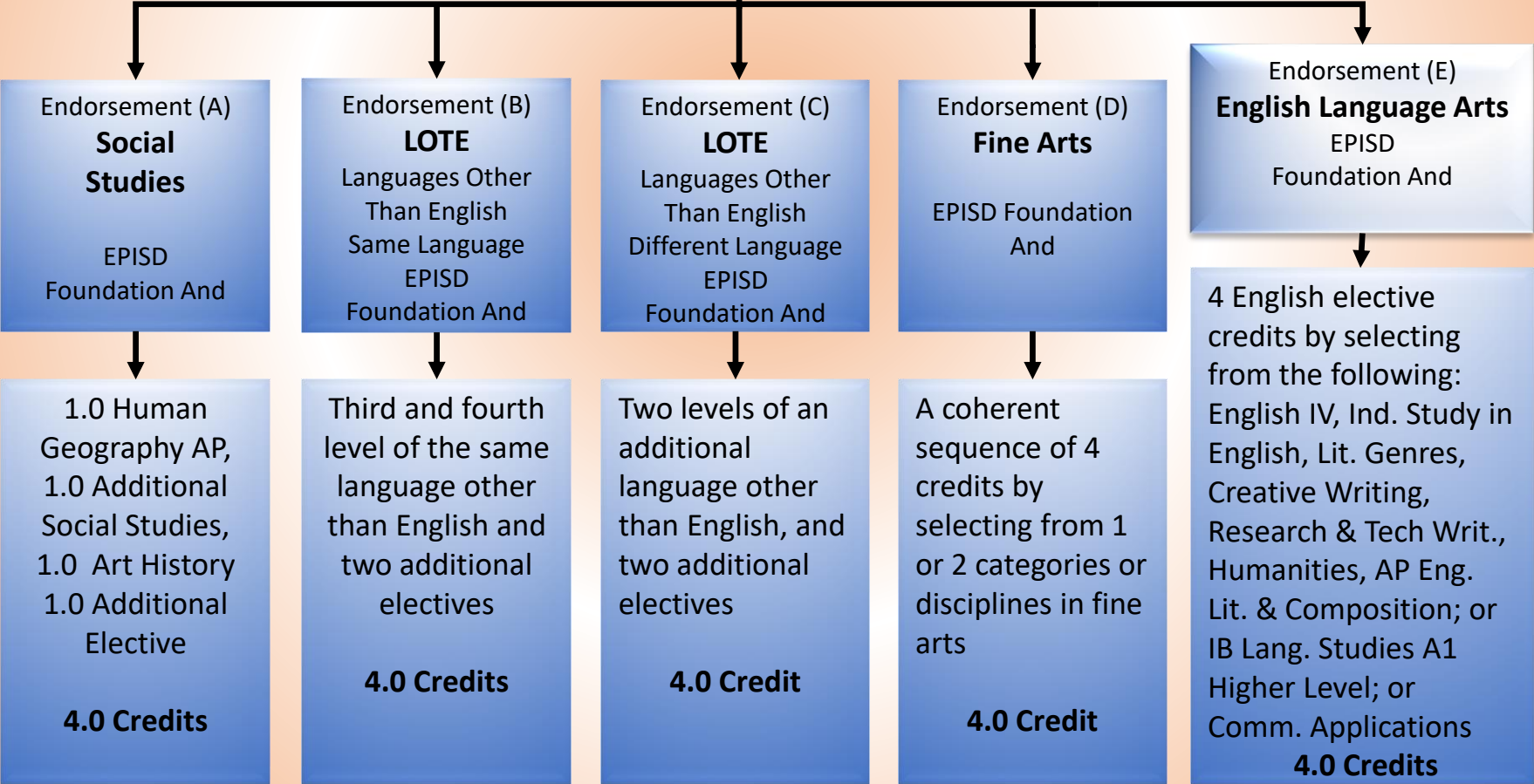
***Uses 0.5 credit elective**

****Most advanced math require Algebra II as prerequisite**

ARTS AND HUMANITIES ENDORSEMENT OPTIONS
 Foundation (22 Credits) + Endorsement (4.0 Credits) = 26 Credits



**Academic
 Distinguished Level of Achievement**



BUSINESS & INDUSTRY ENDORSEMENT OPTIONS

Foundation (22 Credits) + Endorsement (4.0 Credits) = 26 Credits



Career & Technical Education Distinguished Level of Achievement

Endorsement (A)
CAREER & TECHNICAL EDUCATION
EPISD
Foundation And

A coherent sequence of courses for 4 or more credits in CTE that consists of at least 2 courses in the same career cluster including at least one advanced CTE course which includes any course that is the third or higher course in a sequence. That final course must be from one of the following clusters: Agriculture, Food & Natural Resources, Architecture & Construction, Arts, Audio/Video Technology, & Communication, Business Management Administration, Finance, Hospitality & Tourism, Information Technology, Manufacturing, Marketing, or Transportation.
4.0 Credits

Academic Distinguished Level of Achievement

Endorsement (B)
ENGLISH
EPISD
Foundation And

Three Levels of Public Speaking OR
Three Levels of Debate OR
Three Levels of Adv. Journ. Newspaper OR
Three Levels Adv. Journ. Yearbook & 1 English elect.
4.0 Credit

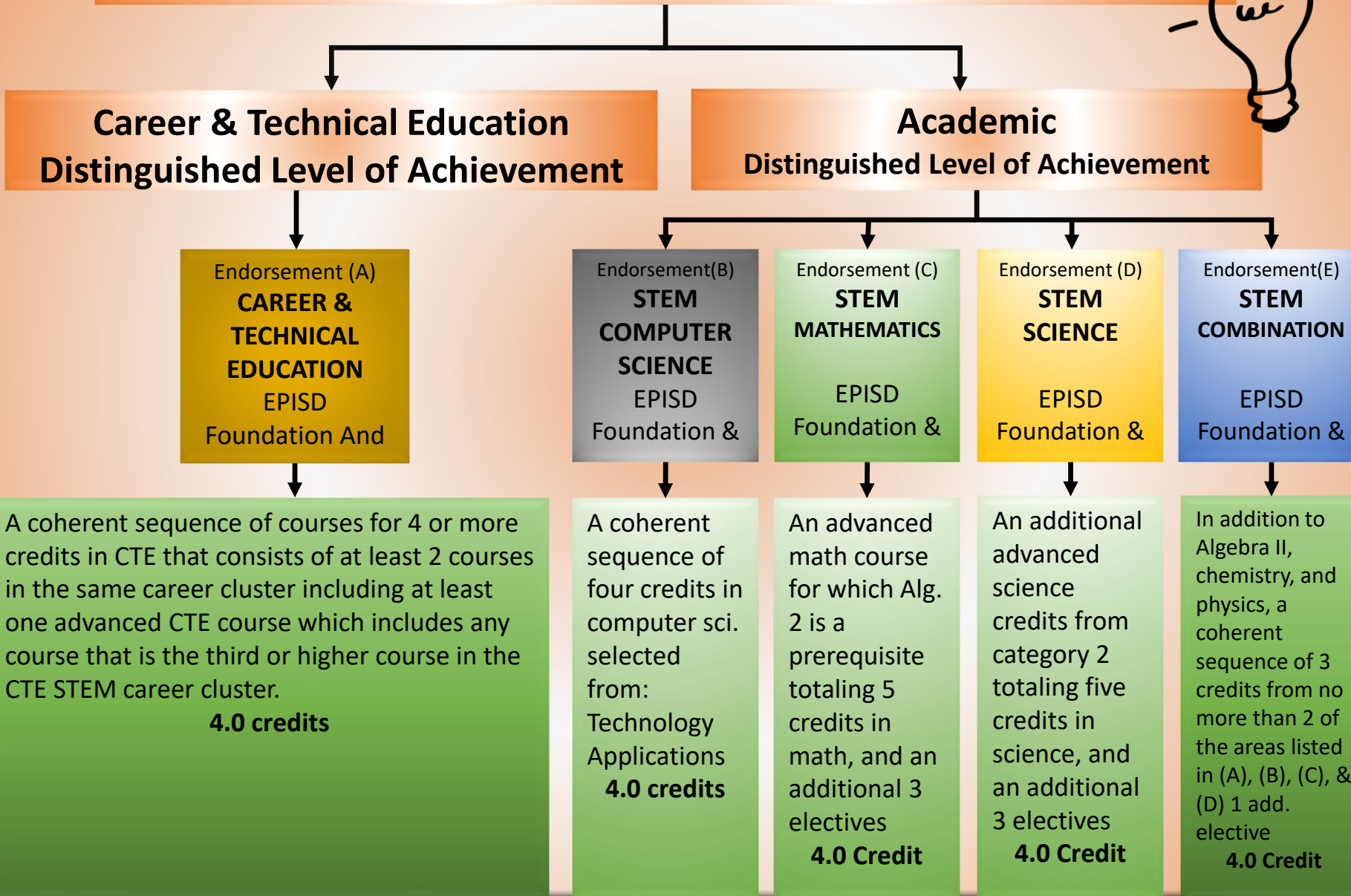
Endorsement (C)
TECHNOLOGY APPLICATIONS
EPISD
Foundation And

4 technology applications credits by selecting from: Digital Design, Digital Art, 3-D Modeling, Digital Communications, Digital Video, Web Communications, & Design, Gaming
4.0 Credits

Endorsement (D)
BUSINESS COMBINATION
EPISD
Foundation And

4 Credits From any Business and Industry Endorsement; (A), (B), or (C)
4.0 Credits

SCIENCE, TECHNOLOGY, ENGINEERING & MATHEMATICS
 Foundation (22 Credits) + Endorsement (4.0 Credits) = 26 Credits



A coherent sequence of courses for 4 or more credits in CTE that consists of at least 2 courses in the same career cluster including at least one advanced CTE course which includes any course that is the third or higher course in the CTE STEM career cluster.
4.0 credits

A coherent sequence of four credits in computer sci. selected from:
 Technology Applications
4.0 credits

An advanced math course for which Alg. 2 is a prerequisite totaling 5 credits in math, and an additional 3 electives
4.0 Credit

An additional advanced science credits from category 2 totaling five credits in science, and an additional 3 electives
4.0 Credit

In addition to Algebra II, chemistry, and physics, a coherent sequence of 3 credits from no more than 2 of the areas listed in (A), (B), (C), & (D) 1 add. elective
4.0 Credit

PUBLIC SERVICES ENDORSEMENT OPTIONS
Foundation (22 Credits) + Endorsement (4.0 Credits) = 26 Credits



**Career & Technical Education
Distinguished Level of Achievement**

**Academic
Distinguished Level of Achievement**

Endorsement (A)
CAREER &
TECHNICAL
EDUCATION
EPISD Foundation
And

Endorsement (B)
**Junior Reserve Officer Training Corps
(JROTC)**
EPISD Foundation
And

A coherent sequence of courses for 4 or more credits in CTE that consists of at least 2 courses in the same career cluster including at least one advanced CTE course which includes any course that is the third or higher course in a sequence. That final course must be from one of the following clusters:
The final course must be from one of the Following clusters:
Education & Training, Government and Public Administration, Health Science, Human Services, Law, Public Safety, Corrections, and Security

4.0 Credits

Four credits in the Junior Reserve Officer Training Corps (JROTC).
4.0 Credits

MULTIDISCIPLINARY ENDORSEMENT OPTIONS
Foundation (22 Credits) + Endorsement (4.0 Credits) = 26 Credits



Career & Technical Education
Distinguished Level of Achievement

Academic
Distinguished Level of Achievement

Endorsement (A)
Workforce
Post-Secondary Education
EPISD
Foundation And

Endorsement (B)
Core Concentration
EPISD
Foundation And

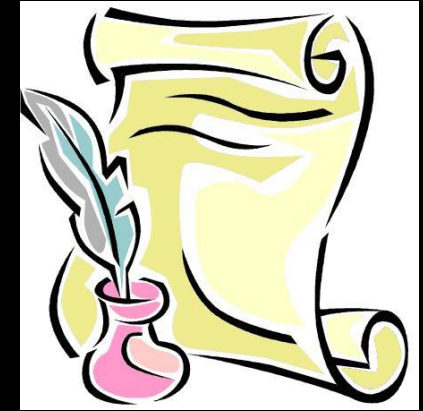
Endorsement (C)
Advanced
EPISD
Foundation And

Four advanced courses that prepare a student to enter the workforce successfully or postsecondary education without remediation from within one endorsement area or among endorsement areas that are not in a coherent sequence
4.0 Credits

Four credits to include one additional social studies and three elective credits
4.0 Credit

Four credits to include a fourth social studies: Advanced Placement, (AP) OR International Baccalaureate (IB) OR Dual Credit (DC)
Courses can be elected from English, mathematics, science, social studies, economics, languages other than English, or fine arts.
4.0 Credits

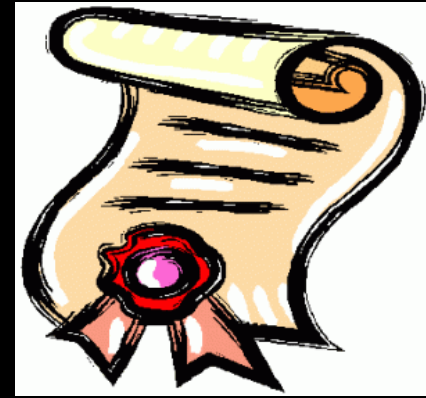
Your Endorsement Letter:



- Graduation is granted based on completing Foundation and Endorsement courses.
- A signed copy is on file with your counselor from 9th Grade

Performance Acknowledgments

will award students a cord at graduation!



Dual Credit Courses: Complete 12 DC hours with a 3.0 or higher, or earn an Associate degree while in high school.

ADVANCED PLACEMENT or IB: Earn a score of 3 or above on an AP exam, or earn a score of 4 or above on an IB exam.

PSAT,ACT-ASPIRE,SAT, or ACT:

PSAT, ACT-PLAN, ACT/SAT Scores: Earn a total score of 1310 on SAT, Earn a composite score of 28 on ACT, Earn National Merit Recognition on PSAT, or earn college readiness benchmarks on at least three of the five subject tests on ACT Aspire

BUSINESS OR INDUSTRY CERTIFICATION/LICENSE: Earn an nationally recognized business or industry certification or earn a certification or licensure representing a student's substantial course of study or end of program knowledge

BILINGUALISM:

A. Completed all English Language Arts requirements and maintained a minimum GPA of 80 on a scale of 100; and

B. Satisfied ONE of the following:

- i. completed 3 LOTE credits in the same language with a mini. of GPA of 80 on a scale of 100; or
- ii. demonstrated TEKS prof. in Level IV of LOTE with a min. GPA of 80 on a scale of 100; or
- iii. completed at three credits in LOTE with minimum of 80 on a scale of 100; or
- iv. demonstrated proficiency in LOTE by

I. score of 3 or higher on AP LOTE exam; or

II. score of 4 or higher on IB LOTE exam; or

III. national assessment proficiency of at least Intermediate High or equivalent

In addition, an English Language Learner must also complete:

Participated in and met exit criteria for bilingual or ESL program; and

Scored at the Advanced High Level on TELPAS

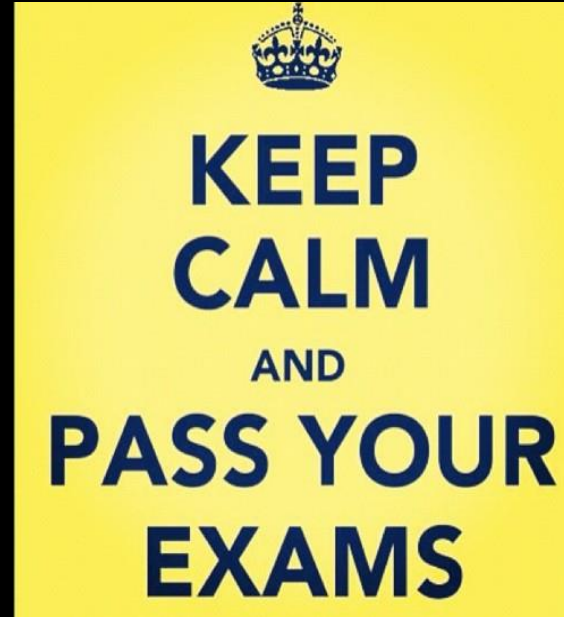
Thank You

Graduation is granted based on completing Foundation & Endorsement courses as well as meeting success on the 5 require EOC exams!



End Of Course Exams you must pass before graduation:

- English 1
- English 2
- Biology
- Algebra 1
- US History



Counselors by Alpha

Counselors-Main Campus:

Debra Priego	A – CHAN	dxpriego@episd.org	ext 62221	575-347-1861
Laura Schuler (Lead Counselor)	CHAO-J.FERNANDEZ	lmschule@episd.org	ext 62226	575-322-6669
Cathryn Jamison	KIN-OLI	cbjamison@episd.org	ext 62142	915-308-0845
Vanessa Rendon	K.FERNANDEZ-KIM	vyrendon@episd.org	ext 62223	915-308-6508
Marc Hunter	OLJ-SAN	mihunter@episd.org	ext 62231	915-843-8638
Melissa Arriola	SAO-Z	maarriol@episd.org	ext 62222	915-302-0286
Maria Pizana	Project Counselor	mapizana@episd.org	ext 62372	915-247-6279

Counselors-Magnet Campus

Courtney Martinez	A-GR	cbutter@episd.org	ext 62405	915-247-6205
Lori Palacios	GS-MIR	lepalaci@episd.org	ext 62235	915-843-8210
Katherine Angel	Mis – Z	kdangel@episd.org	ext 62406	915-201-0142